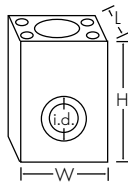


Installation Fittings

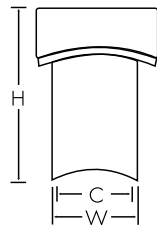
Metalex Socket Weld Mini-Tap (1.4401)



Part No.	Code	Size	L	W	H	i.d.
P526-2005	198 840 501	0.50 in.	2.0	2.4	3.0	0.850
P526-2007	198 840 502	0.75 in.	2.0	2.4	3.0	1.060
P526-2010	198 840 503	1.00 in.	2.0	2.4	3.0	1.325

- For use with SS pipe

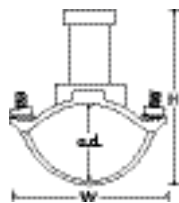
Metalex Weld-On Mini-Tap (1.4401)



Part No.	Code	Size	W	H	C
P526-2012	159 000 494	1.25 in.	1.66	2.25	1.062
P526-2015	198 840 506	1.50 in.	1.66	2.20	1.062
P526-2020	159 000 495	2.00 in.	1.66	2.17	1.062
P526-2025	159 000 496	2.50 in.	1.66	2.10	1.062
P526-2030	159 000 497	3.00 in.	1.66	2.0	1.062
P526-2040	159 000 498	4.00 in.	1.66	1.95	1.062
P526-2050	159 000 499	5.00 in.	1.66	1.83	1.062
P526-2060	159 000 500	6.00 in.	1.66	1.75	1.062
P526-2080	159 000 501	8.00 in.	1.66	1.56	1.062
P526-2100	159 000 502	10.0 in.	1.66	1.35	1.062
P526-2120	159 000 503	12.0 in.	1.66	1.15	1.062

- For use with SS pipe
- Gasket Klinger C4401 Thermoseal

Metalex Strap-On Saddle (1.4401)

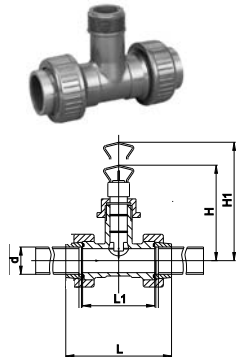


Part No.	Code	Size	H	W	o.d. min.	o.d. max.
P526-1020	159 000 484	2.00 in.	7.0	5.5	2.35	2.56
P526-1025	159 000 485	2.50 in.	7.0	5.5	2.44	2.91
P526-1030	159 000 486	3.00 in.	7.5	6.0	2.97	3.54
P526-1040	159 000 487	4.00 in.	8.0	7.0	3.74	4.55
P526-1050	159 000 488	5.00 in.	10.0	8.0	4.74	5.63
P526-1060	159 000 489	6.00 in.	10.5	9.5	5.94	6.70
P526-1080	159 000 490	8.00 in.	12.75	12.0	7.69	8.72
P526-1100	159 000 491	10.00 in.	14.5	15.0	10.64	12.12
P526-1120	159 000 492	12.00 in.	17.0	17.0	12.62	14.32

- Buna Nitrile O-ring

Installation Fittings

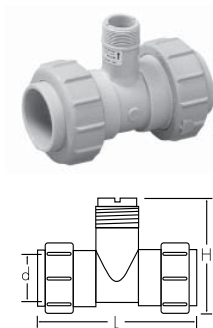
Metric PVC-U Tee Fittings



Part No.	Code	DN	H	H1	L	L1	d
PVMT005	198 150 480	15 mm	145	225	128	90	20
PVMT007	198 150 481	20 mm	148	228	144	100	25
PVMT010	198 150 482	25 mm	151	231	160	110	32
PVMT012	198 150 483	32 mm	155	235	168	110	40
PVMT015	198 150 484	40 mm	159	239	188	120	50
PVMT020	198 150 485	50 mm	164	244	212	130	63

- FPM O-ring
- These fittings are only available from your local George Fischer sales office

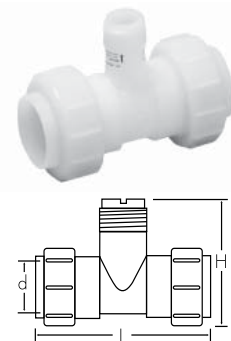
Metric PP Union Tee Fittings



Part No.	Code	DN	L	H	d
PPMT005	198 150 522	15 mm	128	97	20
PPMT007	198 150 523	20 mm	142	105	25
PPMT010	198 150 524	25 mm	156	110	32
PPMT012	198 150 525	32 mm	160	120	40
PPMT015	198 150 526	40 mm	176	130	50
PPMT020	198 150 527	50 mm	194	146	63

- Socket fusion equipment is required to install PVDF and PP union tees.
- FPM O-rings

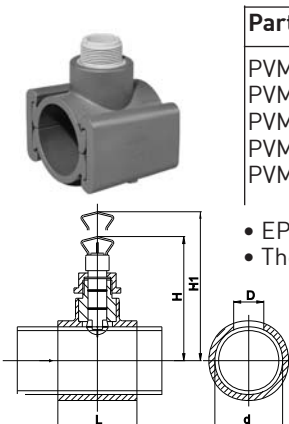
Metric PVDF Union Tee Fittings



Part No.	Code	DN	L	H	d
SFMT005	198 150 529	15 mm	128	97	20
SFMT007	198 150 530	20 mm	142	105	25
SFMT010	198 150 531	25 mm	156	110	32
SFMT012	198 150 532	32 mm	160	120	40
SFMT015	198 150 533	40 mm	176	130	50
SFMT020	198 150 534	50 mm	194	146	63

- Socket fusion equipment is required to install PVDF and PP union tees.
- FPM O-rings

Metric PVC-U Saddle Fittings



Part No.	Code	DN	D	H	H1	L	d
PVMS025	198 150 538	65 mm	30	170	250	105	75
PVMS030	198 150 539	80 mm	39	175	255	105	90
PVMS040	198 150 540	100 mm	39	184	264	105	110
PVMS060	198 150 543	150 mm	39	224	339	120	160
PVMS080	198 150 545	200 mm	39	251	366	120	225

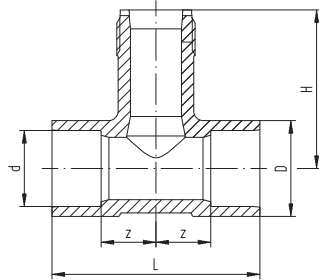
- EPDM Gasket
- These fittings are only available from your local George Fischer sales office

Installation Fittings

ABS Installation Fittings



Code	DN	d	L	H	Z
729 310 007	DN20	25	100	78	32
729 310 008	DN25	32	110	81	33
729 310 009	DN32	40	110	85	29
729 310 010	DN40	50	120	89	29
729 310 011	DN50	63	130	95	28



CoolFit™ Installation Fittings



Code	DN	d	L	H	Z
Black pipe (shown)					
738 310 107	DN20	25	220	78	110
738 310 108	DN25	32	220	81	110
738 310 109	DN32	40	220	85	110
738 310 110	DN40	50	220	89	110
738 310 111	DN50	63	220	95	110
White pipe					
738 310 207	DN20	25	220	78	110
738 310 208	DN25	32	220	81	110
738 310 209	DN32	40	220	85	110
738 310 210	DN40	50	220	89	110
738 310 211	DN50	63	220	95	110

